

caracole



WELT PLAYED SLEEPER

uph-019-017-c

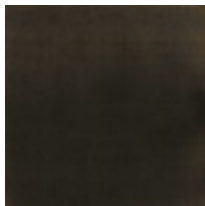
COLLECTION: CARACOLE UPHOLSTERY

DIMENSIONS: 83W x 40D x 32.5H

Drawing inspiration from Fashion Week in Paris, the Welt Played Sleeper offers modern styling brought to life with warmth and texture. Tailored in a brushed tweed fabric, it features clean lines and linear forms outlined with contrasting welts in charcoal billiard cloth. The resulting aesthetic is one of understated sophistication. For a fashionable finishing touch, we've added accent pillows in a stone-colored faux shearling and charcoal billiard cloth to match the welt. Collection includes a matching chair and sofa with three different colorway options.

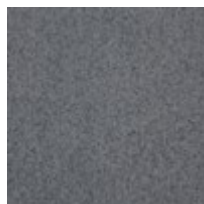
CONSTRUCTION: Springdown cushion. | 8-Way hand tied seat. | Feather down pillows.

FINISH:



Almost-Black

FABRIC:





Body Fabric: 2833-
35CC-P
Performance with
Contrast Welt 2834-
09CC

Pillow Fabric: 2-21" x 1-19" x 19" Pillow
21" Pillows 8405- 2834-09CC
10CC