

caracole



WELT PLAYED SLEEPER

uph-019-017-b

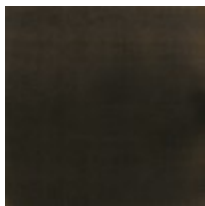
COLLECTION: CARACOLE UPHOLSTERY

DIMENSIONS: 83W x 40D x 32.5H

Drawing inspiration from Fashion Week in Paris, the Welt Played sofa offers modern styling brought to life with warmth and texture. Tailored in a smoky taupe performance fabric, it features clean lines and linear forms outlined with contrasting welts in a cream velvet. For a fashionable finishing touch, we've added accent pillows in a textured herringbone pattern and a cream-colored velvet. The resulting aesthetic is one of understated sophistication. Collection includes a matching chair and sofa with three different colorway options.

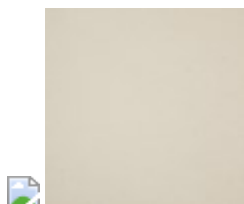
CONSTRUCTION: Springdown cushion. | 8-Way hand tied seat. | Feather down pillows. | Mattress Size: 72 x 60 x 4

FINISH:

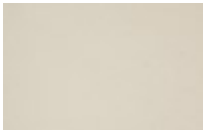


Almost-Black

FABRIC:



Pillow Fabric: 2-21" x 21" Pillows 2831-



71CC

Body Fabric: 2830-
71CC-P
Performance with
Contrast Welt 2832-
34CC