

caracole



WELT PLAYED SLEEPER

uph-019-017-a

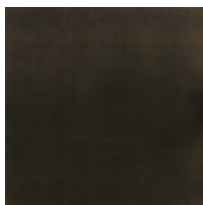
COLLECTION: CARACOLE UPHOLSTERY

DIMENSIONS: 83W x 40D x 32.5H

Drawing inspiration from Fashion Week in Paris, the Welt Played sofa offers modern styling brought to life with warmth and texture. The autumn colors and material combinations shown by major apparel design houses inspired this chair's tweed, chocolate, and spice combination. Tailored in a gray, menswear-influenced fabric, it features clean lines and linear forms outlined with contrasting welts in chocolate brown. The resulting aesthetic is one of understated sophistication. Collection includes a matching chair and sofa with three different colorway options.

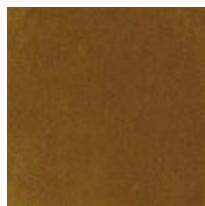
CONSTRUCTION: Springdown cushion. | 8-Way hand tied seat. | Feather down pillows.

FINISH:

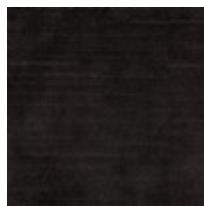


Almost-Black

FABRIC:



Pillow Fabric: 2-
21x21 inch Pillows
2749-85CC



1-19x19 inch Pillow
2770-91CC



Body Fabric: 2767-
93CC with Contrast
Welt 2770-91CC