

# caracole



## WELT PLAYED

uph-019-016-a

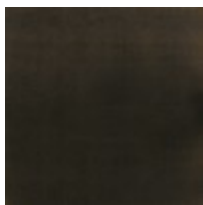
**COLLECTION:** CARACOLE UPHOLSTERY

**DIMENSIONS:** 92W x 40D x 32.5H

Drawing inspiration from Fashion Week in Paris, the Welt Played sofa offers modern styling brought to life with warmth and texture. The autumn colors and material combinations shown by major apparel design houses inspired this chair's tweed, chocolate, and spice combination. Tailored in a gray, menswear-influenced fabric, it features clean lines and linear forms outlined with contrasting welts in chocolate brown. The resulting aesthetic is one of understated sophistication. Collection includes a matching chair and sleeper with three different colorway options.

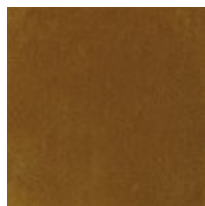
**CONSTRUCTION:** Springdown cushion. | 8-Way hand tied seat. | Feather down pillows

### FINISH:

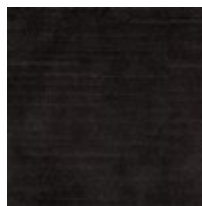


Almost-Black

### FABRIC:



Pillow Fabric: 2-21" x 21" Pillows 2749-85CC



1-19" x 19" Pillow 2770-91CC



Body Fabric: 2767-  
93CC with Contrast  
Welt 2770-91CC