

caracole



LOOP-DE-LOO

uph-018-231-a

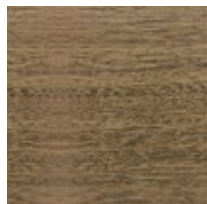
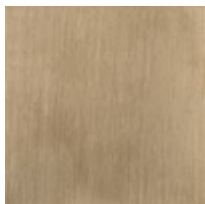
COLLECTION: CARACOLE UPHOLSTERY

DIMENSIONS: 28W x 29D x 28.25H

The epitome of effortless elegance, this iconic chair instantly creates an air of sophistication. An open fretwork design with looping ribbons of metal suspends its shapely, channel-quilted back. Two chic fabrics in shades of latte froth and sapphire blue combine to create its high-fashion appeal—a dressy fabric on its back and base features a subtle gold filament yarn while its seat cushion is tailored in a coordinated ribbed boucle-style fabric. The wood legs are finished in Dappled Mink and are capped with a Champagne Gold metal ferrule offering a graceful disposition with timeless appeal.

CONSTRUCTION: Blendown cushion. | 8-Way hand tied seat.

FINISH:



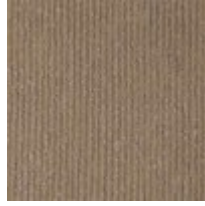
Champagne Gold

Dappled Mink

FABRIC:



Body Fabric: Top Rail
and Base 2652-
46CC



Seat Cushion 2654-
85CC