

caracole



SHE'S A CHARMER

uph-018-131-a

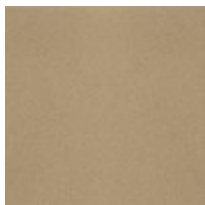
COLLECTION: CARACOLE UPHOLSTERY

DIMENSIONS: 37W x 39.5D x 33.5H

A curvaceous charmer, this sophisticated chair offers endless appeal. Its rounded silhouette is distinguished by deep stitched diamond tufting accented with opalescent glass beads that sparkle against its linen-like neutral fabric with just a touch of sheen. Inspired by a lady's bangle bracelet, it features a Champagne Gold metal cuff detail that completes the look. Its curvaceous wood frame is finished in Champagne Reflections, a designer touch which adds a bit of sparkle and complements the chair's jeweled back.

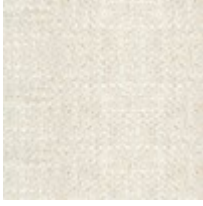
CONSTRUCTION: Blendown cushion. | 8-Way hand tied seat.

FINISH:



Warm_Reflections

FABRIC:



Body Fabric: 2644-
87CC