

caracole



GO FOR A SPIN

uph-018-035-a

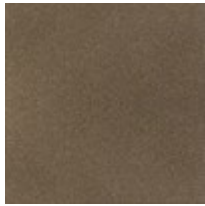
COLLECTION: Caracole Upholstery

DIMENSIONS: 27.5W x 31D x 33H

Expressing your unique perspective is easy with this sublime swivel chair. Bold in its every detail, it features a barrel base finished in Harvest Bronze with a Champagne Gold metal wrap. Two luxe fabrics are combined to masterful effect while a painted wood trim creates a pencil rail outlining its shapely silhouette. Its interior is upholstered in a plush espresso chenille while its exterior is impeccably tailored in a textural geometric pattern highlighted with gold metallic yarns. Perfect on its own or paired together for visual impact, this chair represents the essence of Art Deco modernized for today's lifestyles.

CONSTRUCTION: Plush poly foam cushion. | 8-Way hand tied seat.

FINISH:



Harvest_Bronze

FABRIC:



Body Fabric:
Inside 2643-
78CC, Outside
8317-78CC