

caracole



A FLAIR TO REMEMBER

uph-018-011-a

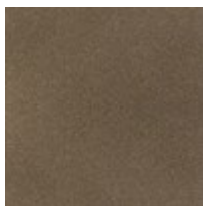
COLLECTION: CARACOLE UPHOLSTERY

DIMENSIONS: 109W x 44.5D x 33.5H

Reminiscent of Art Deco styling, this sophisticated sofa infuses fluidity with clarity. A shapely stylized camelback complements its kidney shape while inviting your eye and your imagination to wander. Its crisp upholstered rail creates a soft, encompassing cocoon as it follows every turn and curve of the frame. A warm Harvest Bronze finish highlights the wood base—connecting the sofa to its setting. Upholstered in a warm, pale grey fabric with a subtle ripple pattern, this stylish sofa is accented with pairs of pillows in a shimmering champagne cut velvet, a graphic Art Deco stylized floral, and one velvet kidney pillow in an intensely saturated sapphire shade.

CONSTRUCTION: Springdown cushion. | 8-Way hand tied seat. | Feather down pillows.

FINISH:



Harvest_Bronze

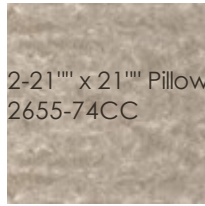
FABRIC:



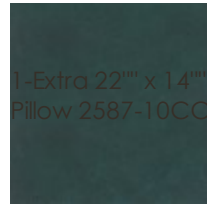
Body Fabric: 2656-74CC



Pillow Fabric: 2-22" x 22" Pillows 8308-93CC



2-21" x 21" Pillows 2655-74CC



1-Extra 22" x 14" Pillow 2587-10CC