

caracole



CHAIR-ISH

uph-016-136-a

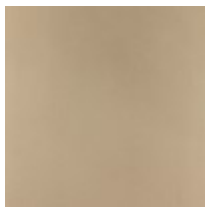
COLLECTION: CARACOLE UPHOLSTERY

DIMENSIONS: 31W x 35D x 31H

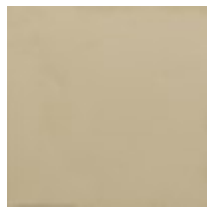
Chair-ish builds on the company's tradition of hand-carved lattice barrel frames with gracefully tapered legs. A retro-modern geometric honeycomb pattern has been rendered in a shimmering Taupe Paint and paired with linen, lightly tufted upholstery in a demure fog color on the front and dark taupe sateen fabric on the back.

CONSTRUCTION: Spring down cushion. | 8-way hand tied seat.

FINISH:



Taupe Paint



Whisper of Gold

FABRIC:



Body Fabric: Inside
2493-71CC, Outside
2536-34CC