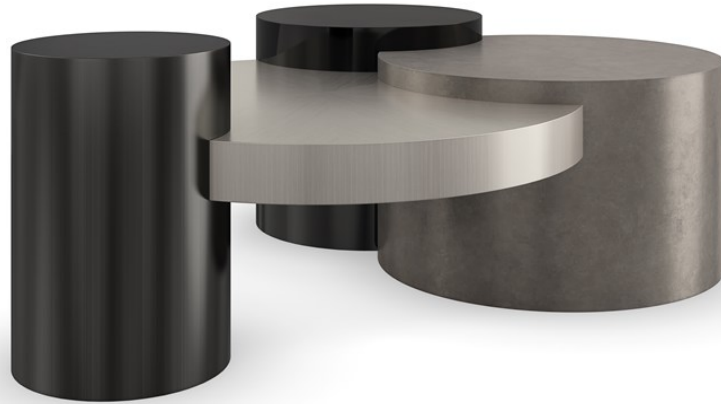


caracole



CONSTELLATION COCKTAIL TABLE

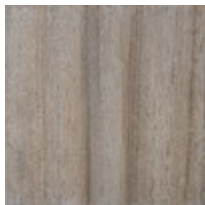
sig-423-401

COLLECTION: Caracole Signature

DIMENSIONS: 56W x 46.5D x 20H

Form and function comes full circle with this modern cocktail table, featuring a luxe mix of details, finishes, and materials. Shimmering metallics pair with Piano Black to elevate simple cylinder shapes, designed to orbit a larger disc that draws attention with an intricately pieced starburst pattern. Style with our Constellation end table for added depth and dimension, and to create a larger space for entertaining and display.

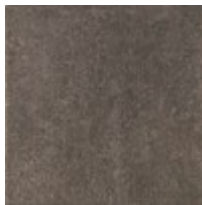
FINISH:



Silver Burst



Piano Black



Twilight Frost



Brushed Tungsten