

# caracole



## THE ARISTOCRAT DINING CHAIR

sig-416-283

**COLLECTION:** Signature Debut

**DIMENSIONS:** 22W x 25.5D x 42.5H

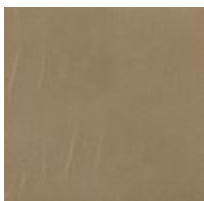
Haute couture finds its way into the equestrian elegance of this beautiful dining side chair. The high back of this softly winged chair is artfully tailored in a quilted warm taupe leather and beautifully appointed with a contemporary gold horseshoe pull positioned at the top of the chair back. The gently curved wood legs are tipped with gold metal ferrules in the front. This is a sumptuous chair that will pair elegantly with any dining table.

### FINISH:



Piano\_Black

### FABRIC:



Fabric: 9085-75CC, 9085-75CC-Q