

# caracole



**REGAL DINING CHAIR**

sig-416-271

**COLLECTION:** Signature Debut

**DIMENSIONS:** 25.5W x 25.5D x 40.5H

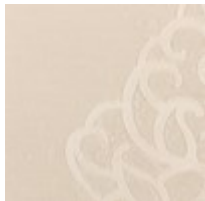
A gloriously carved wood frame punctuates this twenty-first century update to a classic Louis XVI chair. Contemporary Greco Roman details abound in this open armed fauteuil chair. Delicately carved coin and leaf details encircle the upholstered back and extend down the upholstered arm insets and fluted tapered legs. Dressed in a neutral luxurious fabric and finished in a soft Gold Bullion Leaf, this is truly the dressiest of dining chairs. A custom designed arabesque pattern adorns the outside back of the chair. We consider it the jewelry for your dining room.

**FINISH:**



Gold\_Bullion\_Leaf

**FABRIC:**



Body Fabric:  
Inside Back,  
Seat and Welt  
3090-87CC