

caracole



THE REGAL DINING SIDE CHAIR

sig-016-281

COLLECTION: Signature Debut

DIMENSIONS: 25.5W x 25.5D x 40.25H

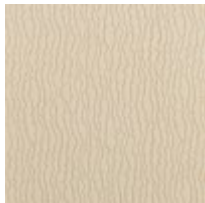
A gloriously carved wood frame punctuates this twenty-first century update to a classic Louis XVI chair. Contemporary Greco Roman details abound in this open armed fauteuil chair. Delicately carved coin and leaf details encircle the upholstered back and extend down the upholstered arm insets and fluted tapered legs. Dressed in a neutral luxurious fabric and finished in a soft Gold Bullion Leaf, this is truly the dressiest of dining chairs. A custom designed arabesque pattern adorns the outside back of the chair. We consider it the jewelry for your dining room.

FINISH:

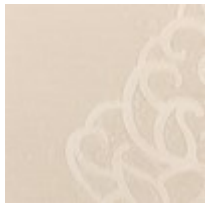


Gold_Bullion_Leaf

FABRIC:



Body Fabric: Inside
Back, Seat and Welt
3090-87CC



Outside Back 5109-
88CC