

caracole



THE MADISON LAF CHAISE

sgu-418-lh1-a

COLLECTION: Signature Urban

DIMENSIONS: 67.5W x 45.25D x 31.75H

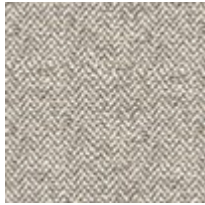
Perfect for a metropolitan penthouse or a country estate, this sophisticated sectional offers the ultimate in modern, urban styling. Upholstered in a handsome neutral herringbone linen-blend, it has three loose back cushions and features three back bolster pillows for additional comfort and style. Contrasting accent pillows in a textured Tobacco-hued linen-blend fabric add visual interest. This handsome sectional has an extra-wide chaise that lets you decide its orientation (left or right) and rests upon angular wood feet. Modern, square track arms with a gentle sloping curve give this sofa a cosmopolitan edge and offer extra resting spots when entertaining large groups.

CONSTRUCTION: 8-Way hand tied seat. | Plush poly foam cushion.

FINISH:



FABRIC:



Body Fabric:
2623-71CC