

caracole



THE DAY DREAMER BENCH

sgu-418-051-a

COLLECTION: Signature Urban

DIMENSIONS: 59.5W x 34.25D x 17.5H

Every room needs an element of surprise and this bench delivers. Our Daydreamer Bench offers playful design elements, intriguing curves, and comfort. We love the uniquely irregular shape and the juxtaposition of its contrasting upholstery fabrics—a dreamy, soft grey faux suede and textured taupe and cream linen weave. Resting atop angular Mid-century Modern-inspired legs, this statement-making bench offers unlimited appeal. Add this versatile piece to a corner of the living room, the master suite, or any space that needs an extra element of fashion.

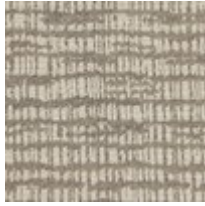
CONSTRUCTION: Plush poly foam cushion.

FINISH:



Modern_Walnut

FABRIC:



Body Fabric: Seat
Cushion 2635-75CC,
Base 2633-70CC

