

# caracole



## THE MELANIE ARM CHAIR

sgu-418-033-a

**COLLECTION:** Signature Urban

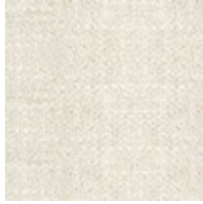
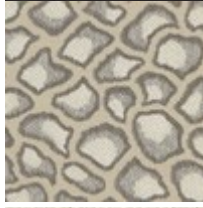
**DIMENSIONS:** 29W x 29D x 29H

Often referred to as a salon chair, the Melanie chair is designed to be positioned in front of a lovely view without a direct line of sight into the dining area. It promises a smooth and relaxing transition from living to dining and again in reverse. It's a lovely way to entertain and speaks to designer JosÃ© Leite de Castro's insightful understanding of what it means to fully embrace the role of host or hostess. Upholstered in an animal-inspired neutral embroidered fabric rendered in a shimmering golden-taupe hue, it's perched atop Mid-century Modern angular wood legs. The chair's flirty silhouette is further emphasized by a winter-white linen welt that outlines its curves. A smart little pillow created from the same fashionable print provides lumbar support.

**CONSTRUCTION:** 8-Way hand tied seat. | Plush poly foam cushion. | Fiber filled pillow.

**FINISH:**

Warm Walnut  
FABRIC



Body Fabric: 8295-35CC, Contrast Welt 2644-87CC Pillow Fabric: 1-17" x 11" Kidney Pillow 8295-35CC with Contrast Welt 2644-87CC