

caracole



THE MADISON CHAIR

sgu-418-021-a

COLLECTION: Signature Urban

DIMENSIONS: 43W x 41.75D x 31.75H

Smart and stylish, this classic chair has clean lines and a gently sloping track arm that makes it a timeless choice. It's sumptuously comfortable and upholstered in a winter-white, linen-blend textured fabric and layered with crisply tailored cushions and a contrasting toss pillow in an eye-catching cream and gold geometric pattern.

CONSTRUCTION: 8-Way hand tied seat. | Plush poly foam cushion.

FINISH:

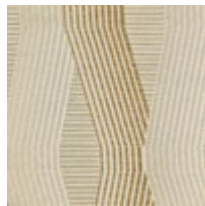


Tuxedo_Black

FABRIC:



Body Fabric:
2644-87CC



Pillow Fabric: 1-
23" x 11" Pillow
8300-42CC