

# caracole



## THE RIBBON CHAIR

sgu-416-033-a

**COLLECTION:** Signature Debut

**DIMENSIONS:** 34.75W x 36.5D x 32.25H

Elegantly enrobed in velvet, this chair has a soft curving back and arms that are a welcoming respite after a long day. Wrapping around the base of the chair is the collection's delicately carved ribbon detail in a soft Gold Bullion Leaf finish. The chair is suspended off the floor on rounded trapeze feet. Lovely and refined, The Ribbon Chair is a perfect addition to any room.

**CONSTRUCTION:** Blendown supreme cushion with memory foam topper. | 8-way hand tied seat. | Feather down pillow.

**FINISH:**

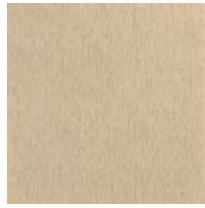


Gold\_Bullion\_Leaf

**FABRIC:**



Body Fabric: 2432-35CC



Pillow Fabric: 1-20" x  
20" Pillow 3105-41CC