

# caracole



## THE SVELTE CHAIR

sgu-017-233-a

**COLLECTION:** Signature Simpatico

**DIMENSIONS:** 31W x 35.75D x 30.75H

The dramatic Svelte Chair is graceful in every respect and from every angle. Inspired by Italian design in the mid century, this chair's extraordinary silhouette is simply breathtaking. Ebony and ivory perfectly harmonize in this intriguing barrel chair. Dark Striped Ebony wraps the back of the piece. The chair's interior and loose cushion are tightly upholstered in a lustrous basketweave fabric in a shimmering Moonstone hue. The chair's beauty comes to life as the top rail gently slopes forward while its base gracefully sweeps downward from its sculptural Majestic Gold front legs to balance on the floor in the back of the chair. Try grouping four or more chairs around a circular cocktail table in a small den or library for the perfect conversation area.

**CONSTRUCTION:** Stainless steel frame. | Blendown supreme cushion with memory foam topper. | 8-way hand tied seat.

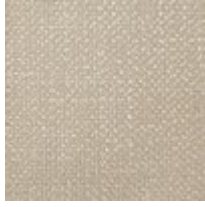
**FINISH:**



Majestic Gold

Striped Ebony

**FABRIC:**



Body Fabric: 2585-  
71CC