

# caracole



## THE WELL-BALANCED SOFA

sgu-017-211-a

**COLLECTION:** Signature Simpatico

**DIMENSIONS:** 105W x 36.25D x 30.25H

The Well-Balanced Sofa was inspired by Italian design and offers beautifully tailored channel tufting in a luxurious basketweave fabric in a shimmering Moonstone hue. This stylish vogue detailing and cosmopolitan silhouette makes this sofa the perfect focal point to build a spectacular room around in whichever chic city you're in across the globe. A tailored, thin gold detail is incorporated into the sofa frame. Its squared arms are the perfect height for resting or reading. Suspended off the ground by a continuous Majestic Gold framework, this sofa appears to be lighter than air. This sofa's sophisticated lines look beautiful when floating in an interior. Consider a pair of sofas in front of a fireplace or to enjoy a beautiful vista. It also pairs beautifully with the Well-Balanced Chair and Ottoman and our seriously stylish Svelte chairs.

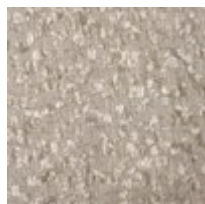
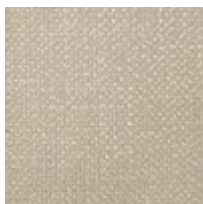
**CONSTRUCTION:** Stainless steel frame. | Memory foam cushion. | 8-way hand tied seat. | Feather down pillows.

### FINISH:



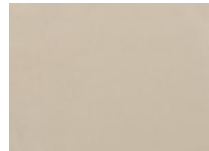
Majestic\_Gold

### FABRIC:



Body Fabric: 2585-

71CC



Pillow Fabric: 2 - 18"  
x 18" Pillows 8257-  
51CC with 2" Boxing  
and Welt 2301-  
35CC