

caracole



CONTRAST LOW BOOKSHELF

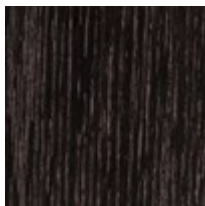
m141-022-812

COLLECTION: MODERN PRINCIPLES

DIMENSIONS: 65W x 16D x 34.25H

A striking contrast of tone and texture, this bold modern design embodies sophistication from simplicity. Open Pore Travertine adds an organic element, punctuated by quarter sawn oak shelves and dividers in a dramatic Cinder finish. Its clean-lined, open form lends the perfect foundation for showcasing collectibles, books and decor.

FINISH:



Cinder