

caracole



CONTRAST NESTING TABLES

m141-022-471

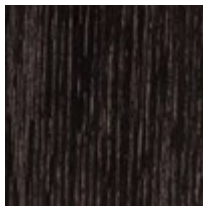
COLLECTION: MODERN PRINCIPLES

DIMENSIONS:

Graduating nesting tables introduce a striking contrast of texture, material and tone. Perfect for entertaining, each table makes its own statement: the larger table is finished in Cinder; the medium table in Cre`me Travertine stone; and the smaller table is finished in Lucent Bronze Metallic metal. The medium and small tables are designed to neatly tuck beneath the larger table when not in use.

CONSTRUCTION: Large Table: 26W x 15D x 22H | Medium Table: 21W x 15D x 19.25H | Small Table: 17W x 15D x 16.5H

FINISH:



Cinder



Lucent Bronze
Metallic