

caracole



SOFT BALANCE CHAIR

m140-022-032-a

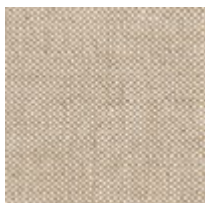
COLLECTION: MODERN PRINCIPLES

DIMENSIONS: 26W x 26.25D x 33H

An elegant integration of symmetry and form, the Soft Balance chair draws the eye with its chic, half-circle shape. A partially open, barrel-back gives the impression of a suspended seat, upholstered in a parchment-colored fabric. Crisp tailoring and an exact alignment of subtly sloping track arms emphasize its unity and geometry. Makes a refined modern statement on its own; even more eye-catching in pairs when used to create a cozy seating nook.

CONSTRUCTION: Webbed seat. | Foam seat cushion.

FABRIC:



Body Fabric: 2931-
35CC-P

