

# caracole



## MOVEMENT CHAIR

m140-022-031-a

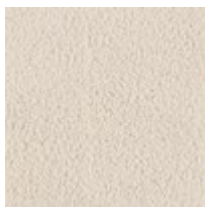
**COLLECTION:** MODERN PRINCIPLES

**DIMENSIONS:** 36.75W x 39.5D x 30.5H

Meticulously tailored in a subtly textured alabaster fabric, the Movement chair invites a sense of calm and repose. Defined by gracefully curving lines that guide the eye along its layered back and sides, its enveloping silhouette offers sleek yet comfortable seating. Style a pair with our Movement sofa to create a chic modern space for conversation and entertaining.

**CONSTRUCTION:** No sag seat. | Plush poly foam cushion

### FABRIC:



Body Fabric: 2938-  
88CC-P  
Performance

