

caracole



REPETITION CHAIR

m120-420-132-a

COLLECTION: MODERN EXPRESSIONS

DIMENSIONS: 26.5W x 26.5D x 31.25H

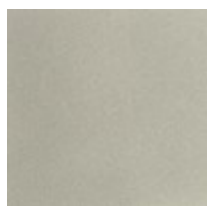
Curves meet angles in the geometric complexity of this superstar chair. You'll find repetition in the slope of its back and matching curve of its arms. It boasts strong lines softened by the plush comfort of its upholstered seat and back and the touchable softness of its luxurious fabric cover. Highlighted with finishes in Charcoal Stain and Modern Nickel, this captivating chair adds an element of modern sophistication to any room.

CONSTRUCTION: Blendown cushion. | No sag seat.

FINISH:



Charcoal Stain



Modern Nickel

FABRIC:



Body Fabric: 8384-
92CC