

caracole



REMIX WOVEN DINING CHAIR

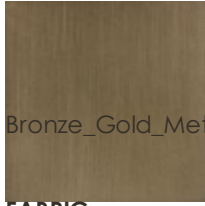
m112-019-274

COLLECTION: MODERN REMIX

DIMENSIONS: 26W x 25D x 32H

Mixing old and new, this remarkable chair is a visual expression of the best of both worlds. Its classic form is updated in luxe materials and intriguing textures to create a must-have piece for today's well-dressed dining room. The chair's metal frame wears a Bronzed Metal finish while elegantly woven black cording highlights the open space alongside each arm. An upholstered seat and seat back in an elegant neutral create a place ideally suited for hours of comfortable sitting and entertaining.

FINISH:



Bronze_Gold_Metal

FABRIC:



2679-35CC-P
Performance