

caracole



REFLECT CHAIR

m110-019-032-a

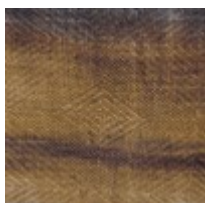
COLLECTION: MODERN REMIX

DIMENSIONS: 26W x 33.25D x 31.25H

Marvelous in every way, the Reflect Chair truly reflects today's top interior design directions. Inspired by the magnificent glass pyramid entrance to the Louvre, its design offers an open, airy silhouette that has substantial presence yet feels visually light. Crafted of pale-blue tinted acrylic, it features decorative, smoked-metal brackets inspired by the way the sky reflects in the museum's iconic glass structure—and paying homage to its timeless geometric form. This accent chair's comfortable seat is upholstered to perfection in a one-of-a-kind fabric befitting its distinctively inspired character.

CONSTRUCTION: Blendown cushion. | No gas seat.

FABRIC:



Body Fabric: 8358-

