

caracole



REVAMP CHAIR

m110-019-031-a

COLLECTION: MODERN REMIX

DIMENSIONS: 33W x 38D x 42H

How does a furniture designer create such an inspiring chair? By starting with the beauty of origami and the intricate creases and angles of the traditional art of folded paper. The crisp lines and powerful character of this modern wing chair with notched arms reflects this modern organic inspiration and brings it to life in a one-of-a-kind statement piece. Splayed legs add a finishing touch and are highlighted in a Midnight Terrain finish.

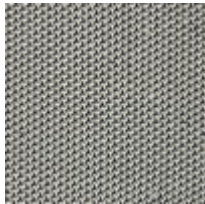
CONSTRUCTION: Blendown cushion. | No sag seat.

FINISH:



Black_Stained_Ash

FABRIC:



Body Fabric:
3224-95CC



Pillow Fabric: 1-
18" x 18" Pillow
8354-86CC