

caracole



DOUBLE EDGE CHAIR

m100-419-034-a

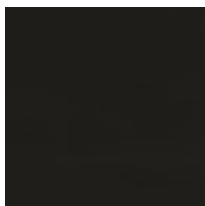
COLLECTION: MODERN EDGE

DIMENSIONS: 34W x 33D x 31.5H

With twice the detailing and twice the character, this singular chair offers double the design impact. Its modern silhouette is curvy in all the right places and features a stacked sabre arm. Two lush, statement-making fabrics create its one-of-a-kind look: a Tuscan teal velvet on its interior and a coordinating micro-stripe along its exterior. Seen from the front, this chair's unique quilting and arm style gives the appearance of a chair within a chair. Sensuously curved, this exceptional chair feels right at home when juxtaposed with the linear, angular silhouettes of other modern furnishings.

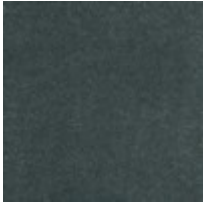
CONSTRUCTION: Blendown cushion. | No sag seat.

FINISH:



Satin_Ebony

FABRIC:



Body Fabric