

# caracole



## DOUBLE EDGE SOFA

m100-419-021-a

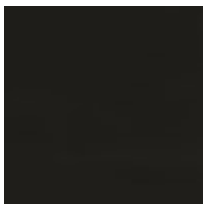
**COLLECTION:** MODERN EDGE

**DIMENSIONS:** 79W x 36.5D x 31.5H

With the twice the detailing and twice the character, this singular sofa offers double the design impact. Its modern silhouette is curved in all the right places and features a stacked sabre arm. Two lush, statement-making fabrics create its one-of-a-kind look: a Tuscan teal velvet on its interior and a coordinating micro-stripe along its exterior. Seen from the front, this sofa's unique quilting and arm style gives the appearance of a sofa within a sofa. Sensuously curved, this exceptional sofa feels right at home when juxtaposed with the linear, angular silhouettes of other modern furnishings.

**CONSTRUCTION:** Blendown cushion. | No sag seat. | Feather down pillows.

**FINISH:**

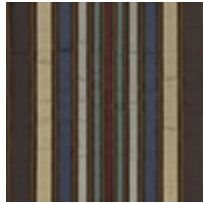


Satin\_Ebony

**FABRIC:**



Body Fabric



Outside 2685-55CC,  
Inside 2680-55CC