

# caracole



## HALF MOON

m090-018-131-a

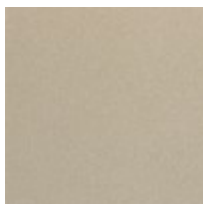
**COLLECTION:** CARACOLE UPHOLSTERY

**DIMENSIONS:** 28.25W x 25.5D x 29.75H

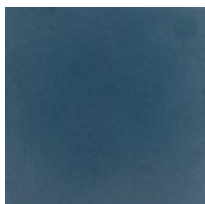
A modern beauty, this shapely chair offers brilliance in every curve. Inspired by the splendor of a geyser erupting with steam and water, it blends shades of cerulean blue and smoke grey with a Dusty Silver finish. Its metal crescent back is finished in a bold shade of cerulean blue and appears to float above its upholstered seat cushion. A richly textured graphic pattern of cerulean and smoke adds depth and dimension to the seat cushion and inside seat back, while button tufting adds a designer touch. Its lasting character feels retro-inspired yet thoroughly fresh and modernized.

**CONSTRUCTION:** Plush poly foam cushion. | Webbed seat.

**FINISH:**



Soft Radiance



Cerulean

**FABRIC:**



Body Fabric: 8311-  
10CC