

# caracole



## GRACE SMALL DRESSER

m083-418-032

**COLLECTION:** MODERN GRACE

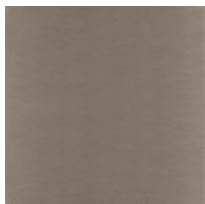
**DIMENSIONS:** 52W x 19D x 35H

Perfect in proportion, this graceful dresser will have you thinking outside the box. Its rounded silhouette and clean lines convey modern elegance. A Brushed Stainless metal base and frame accents its Serene Dark Taupe finish, creating a neutral piece full of character. The innovative design of this nine-drawer dresser features an integrated frame that suspends it off the ground—creating the illusion it's floating. And, each interior drawer wears an elegant painted finish of Almost White.

### FINISH:



Serene Dark Taupe



Brushed Stainless