

caracole



GRACE TRIPLE DRESSER

m083-418-031

COLLECTION: MODERN GRACE

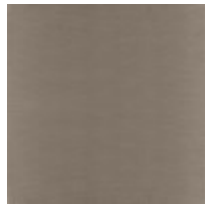
DIMENSIONS: 72W x 19D x 35H

Your clothes deserve a home as elegant as this! Modern in every way, our nine-drawer dresser is a showpiece in itself. Graceful curves are highlighted with a Serene Dark Taupe finish while its base and frame finished in Brushed Stainless add masterful detailing. Its innovative design is nothing short of remarkable and includes an integrated frame design that suspends the dresser off the ground—creating the illusion it's floating. An Almost White finish gives each interior drawer its own touch of luxury.

FINISH:



Serene Dark Taupe



Brushed Stainless