

# caracole



## FUSION TRESTLE DINING TABLE

m052-017-201

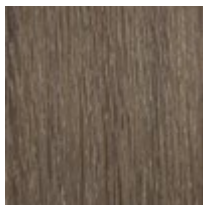
**COLLECTION:** MODERN FUSION

**DIMENSIONS:** 84W x 44.5D x 30H

Every day can feel like a holiday when you serve a meal on this exquisite Trestle Dining Table. A study in contrast, it features a top finished in Ashen Oak paired with a base in a darker Charred Oak finish. Its clean lines offer a refreshingly simple silhouette that is understated yet memorable. Suitable for nearly any dining space, it can be extended to 106 inches with one 22-inch leaf.

**CONSTRUCTION:** Apron height: 28.000"

### FINISH:



Ashen Oak



Charred Oak