

caracole



FUSION MEDIA CONSOLE

m051-017-531

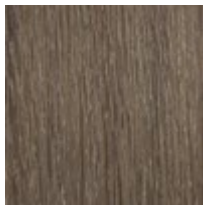
COLLECTION: MODERN FUSION

DIMENSIONS: 80W x 19D x 28H

Infinitely versatile, this sophisticated three-drawer media console puts other media furnishings to shame. The perfect mate to today's high-end electronics, it offers a stylish exterior with Smoked Stainless metal accents, thoughtfully designed features, and an exquisitely finished interior in Warm Slate. Each of its two outside doors open to reveal an adjustable shelf inside. With a back panel featuring cord access, there's no limit to its usefulness.

CONSTRUCTION: Opening above doors and drawers: 5.250".

FINISH:



Ashen Oak



Smoked Stainless