

# caracole



## FUSION CORNER UNIT

m050-017-cr1-a

**COLLECTION:** MODERN FUSION

**DIMENSIONS:** 39W x 39D x 28.25H

Casually elegant, this fully upholstered corner unit is designed to work with the armless chair to create any configuration you need for your living space. Its versatile design lets it work as a right-arm, left-arm or corner piece. Perfectly sized and deeply comfortable, it's tailored to perfection in a neutral, menswear-inspired look with a textured tweed pattern that's touchably soft. Contrasting accent pillows add additional style, fashioned in a deep gunmetal grey velvet and a contemporary styled black and white herringbone stitch. A cut-out boxing design around the outside back and a recessed wood plinth base in Simply Black complete this piece distinctive aesthetic style.

**CONSTRUCTION:** Blendown cushion. | No sag seat. | Feather down pillows.

**FINISH:**

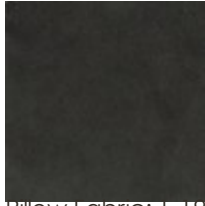


Simply\_Black

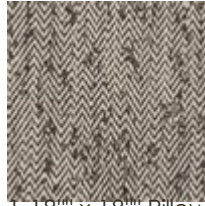
**FABRIC:**



Body Fabric: 2573-71CC



Pillow Fabric: 1-19" x 19" Pillow 2565-55CC



1-18" x 18" Pillow 8262-95CC