

caracole



STREAMLINE CHAIR

m020-417-031-a

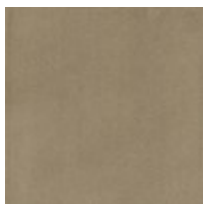
COLLECTION: MODERN STREAMLINE

DIMENSIONS: 33.5W x 38.25D x 28.25H

This stylish chair is low and modern with curvy appeal. Fully upholstered in a textured, creamy basketweave fabric, its frame is refined and curving, with beautiful tailoring to afford smooth, rounded edges. A soft chenille throw pillow in a deep espresso shade adds just the right contrast. The piece is finished with low Smoked Bronze metal feet.

CONSTRUCTION: Blendown supreme cushion. | No sag set. | Feather down pillow.

FINISH:



Smoked_Bronze

FABRIC:



Body Fabric: 2546-
34CC



Pillow Fabric: 1-18''' x
18''' Pillow 2543-
78CC