

caracole



STREAMLINE SOFA

m020-417-011-a

COLLECTION: MODERN STREAMLINE

DIMENSIONS: 96.5W x 38.25D x 28.25H

The streamlined appeal of this low, modern sofa comes from its generously curved features. The piece has a refined profile with a sophisticated rounded frame that welcomes you to sit and relax. Fully upholstered in a textured, creamy basketweave fabric, beautiful tailoring creates smooth edges. With supreme seating comfort, two chenille throw pillows in a rich espresso and two throw pillows with a unique cut velvet geometric design, this sofa is the perfect mix of playful form and function. The piece is finished with low Smoked Bronze metal feet.

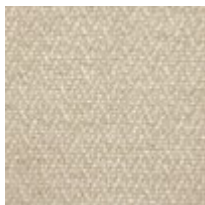
CONSTRUCTION: Blendown supreme cushion. | No sag seat. | Feather down pillows.

FINISH:

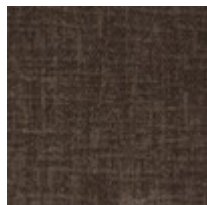


Smoked_Bronze

FABRIC:



Body Fabric: 2546-

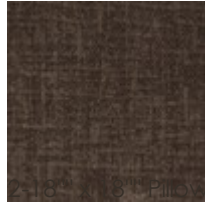


Pillow Fabric: 2-19" x



34CC

19" Pillows 2543-
78CC



8232-78CC with
Contrast Welt 2543-
78CC