

# caracole



## ON THE STAND

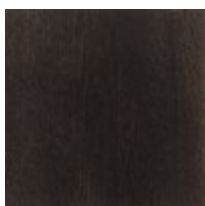
m011-016-416

**COLLECTION:** MODERN UPTOWN

**DIMENSIONS:** 26 dia x 26H

Round, smooth Primavera wood with a high Smoked Peppercorn sheen decorates the top of this piece. The warm Jazzy Taupe metal base has slender square tapered legs joined by rail-thin stretchers. A custom metal and leather pull opens one drawer for storage.

### FINISH:



Smoked Peppercorn



Jazzy Taupe

