

caracole



UPTOWN END TABLE

m011-016-415

COLLECTION: MODERN UPTOWN

DIMENSIONS: 18W x 25D x 26H

An industrial perspective comes to life with the modern mix of materials in this rectangular end table. Topped in dark glass, surrounded by sumptuous leather and positioned on a Jazzy Taupe metal base, the piece's storage belies its size. With drawers at the top and bottom, and open space for books in between, this is a sharp piece for formal or informal areas.

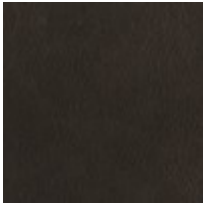
CONSTRUCTION: Distance above shelf: 11.25".

FINISH:



Jazzy_Taupe

FABRIC:



Leather: 9120-
70CC