

caracole



BUNGALOW END

crf-endtab-001

COLLECTION: MODERN CRAFTSMAN

DIMENSIONS: 30W x 18D x 27.5H

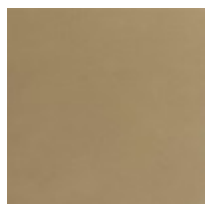
Past perfect. An Italian mid-century antique inspired the design for this attention-grabbing end table that combines graphic, linear shapes with rounded legs and peg joinery. A sculpted, angular apron pays homage to the antique original. Legs are set on an angle and capped with Craftsman Silver metal ferrules. The angular apron is topped with clear glass giving this table a clean finish and light and airy feel.

CONSTRUCTION: Shelf at bottom: 26.5"W x 13.75"D x 19.5"H.

FINISH:



Natural Walnut



Craftsman Silver

