

caracole



A LA CARTE

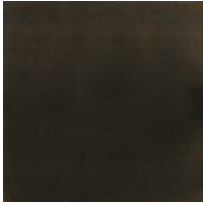
con-sidcha-003

COLLECTION: Caracole Classic

DIMENSIONS: 23W x 26.5D x 39H

AVAILABLE IN CARACOLE COUTURE CUSTOM UPHOLSTERY PROGRAM This is a great go-to chair for a wide variety of dining tables. The A La Carte chair is upholstered in a neutral linen fabric with an Almost Black leg that is accessorized with a sharp silver ferrule. The tall back makes this an exceptionally comfortable seat for a lengthy dinner party. Feel free to dress it up or down. It's your choice!

FINISH:



Almost-Black

FABRIC:



Fabric: 2003-
43CC