

caracole



FOR YOUR VIEWING PLEASURE

con-closto-072

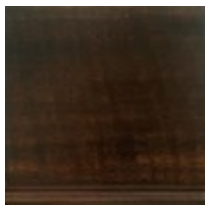
COLLECTION: CARACOLE CLASSIC

DIMENSIONS: 100W x 18D x 30.5H

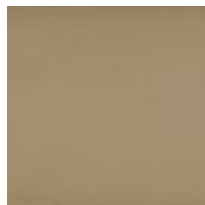
At 100-inches wide, there couldn't be a more dramatic centerpiece for both entertainment and design enthusiasts. Used with or without the largest plasma screen, the face of this cabinet is sure to capture everyone's attention. Each of the four touch latch doors feature over 300 pieces of white faux bone, individually applied and secured with petite, polished brass nail heads. The molded base is finished in Gold Bullion Paint. The cabinet case is made of fumed Eucalyptus veneers and hardwoods finished in a dark French Roast. If the movie isn't anything to talk about, this entertainment center will keep the conversation going.

CONSTRUCTION: Two adjustable shelves: 23.5" W x 15.25" D x 22.75" H. | Opening: 24" W x 16" D x 12" H.

FINISH:



French Roast



Gold Bullion Paint