

caracole



RHYTHM END TABLE

cla-425v-411

COLLECTION: CARACOLE CLASSIC

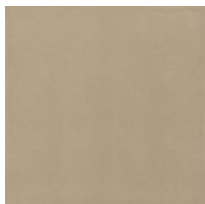
DIMENSIONS: 22.75W x 22.75D x 22H

""Enhance your living space with the Rhythm End Table, featuring a Travertine stone top and a Sun Drenched Oak finished case. Two drawers with reeded fronts and soft-close guides offer practical storage, elegantly supported by a Neutral Metallic base, combining natural beauty and refined craftsmanship.""

FINISH:



Sun Drenched Oak



Neutral Metallic

