

caracole



CHASM MEDIA

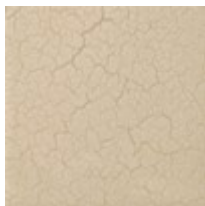
cla-424-532

COLLECTION: CARACOLE CLASSIC

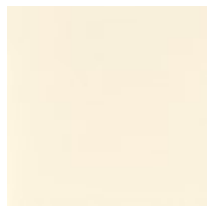
DIMENSIONS: 72W x 20D x 32.5H

This three-door media console is distinguished by its offset oval, see-through chasm on the bottom left of the chest. The chasm softens the look of this modern linear piece with its curves and shimmering Brushed Gold paint. The console's outside is finished in Ivory Craze crackle paint, lending a stone-like quality to the piece. Three touch-latch doors have asymmetrical oval cutouts in Taupe Silver Leaf. The interior is finished in Almond Milk with three adjustable Smoked Bronze glass shelves and wire management access. The piece has a base in Brushed Gold paint.

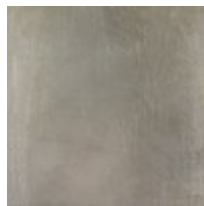
FINISH:



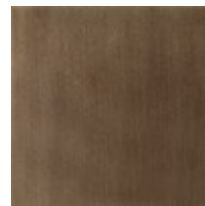
Ivory Craze



Ivory



Taupe Silver Leaf



Brushed Gold Paint