

# caracole



## RESERVED SEATING SIDE

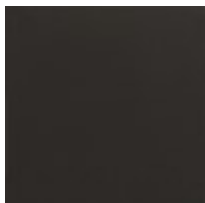
cla-424-285k

**COLLECTION:** CARACOLE CLASSIC

**DIMENSIONS:** 19.5W x 24D x 32.5H

This contemporary arm chair takes on dramatic style when you view the wide, Whisper of Gold panel that shines off its back. Velvet fabric fully surrounds the square upper back and seat cushion that rest on an exposed wood frame, sabre legs and gracefully curving arms finished in Seal Skin. This is a low, klismos chair with truly polished appeal.

### FINISH:



Seal Skin



Whisper of Gold

### FABRIC:



2794-40CC