

# caracole



## STOP AND STARE

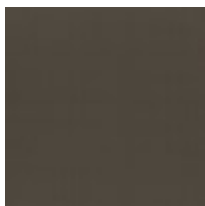
cla-424-215b

**COLLECTION:** CARACOLE CLASSIC

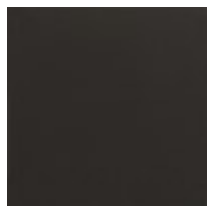
**DIMENSIONS:** 59W x 18D x 34H

It's true, this console is so extraordinary, you can't help but Stop And Stare. It's an instant source of brightness and reflectivity that creates a natural focal point. A wavy acrylic exterior mirrors the undulating patterns of sand and sea while its top adds another layer of organic splendor. The mirrored interior back and bottom panels are designed to reflect light as it pours in from every angle as well as mirror the beauty of the treasures you display. Glass shelves ensure unobstructed views as do its touch-latch doors with concealed hinges. A Brushed Deep Bronze outlines its rounded silhouette and four tapered feet, imparting the overall luxe feeling of a diamond in a platinum setting.

### FINISH:



Brushed Deep  
Bronze



Seal Skin