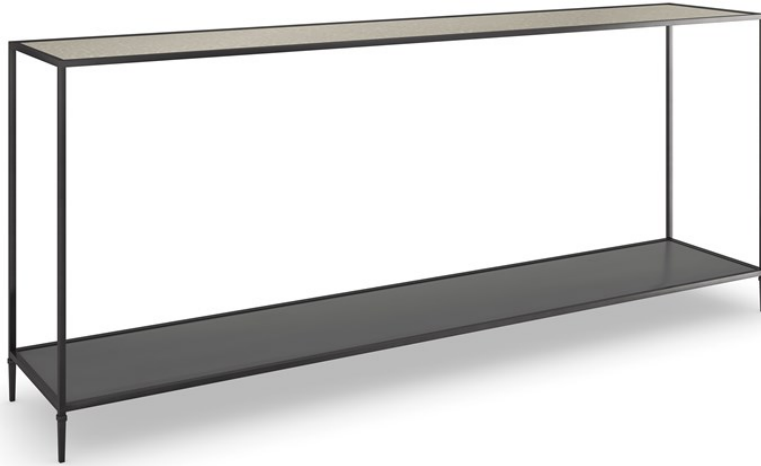


caracole



SMOULDER CONSOLE TABLE

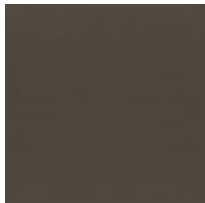
cla-423-442

COLLECTION: CARACOLE CLASSIC

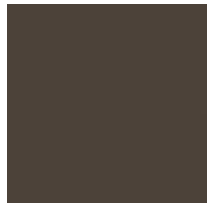
DIMENSIONS: 70W x 14D x 29H

Sleek and sophisticated in a moody material mix, this clean-lined console table offers endless style potential. Its delicate yet durable design features a Brushed Deep Bronze metal frame with tall tapered legs and a Warm Slate wood shelf for open storage and display. An antique mirrored top adds depth and character to its essentially elegant, classic silhouette.

FINISH:



Brushed Deep
Bronze



Warm Slate