

# caracole



## SMOULDER SQUARE END TABLE

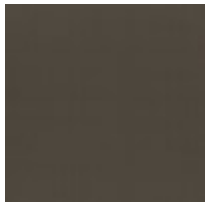
cla-423-418

**COLLECTION:** CARACOLE CLASSIC

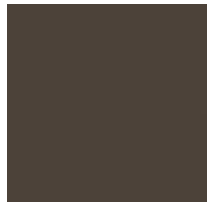
**DIMENSIONS:** 22W x 22D x 25H

An essential end table with a classic square shape and an antique mirrored top for added depth and reflection. Its delicate yet durable design features a Brushed Deep Bronze metal frame with tall tapered legs and Warm Slate wood shelves for open storage and display. Elegant in its simplicity and moody mix of materials, it introduces a timeless style with endless potential.

### FINISH:



Brushed Deep  
Bronze



Warm Slate

