

caracole



ALLOY END TABLE

cla-423-411

COLLECTION: CARACOLE CLASSIC

DIMENSIONS: 22W x 22D x 24H

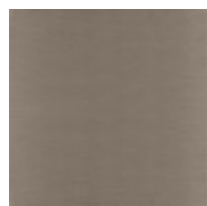
A seemingly floating glass shelf in a smoky bronze finish adds to the allure of this end table, inspired by the bent metal work of notable French designer Royère. Features ornamental legs, meticulously crafted in a fusion of Deep Bronze, Brushed Gold, and Brushed Stainless metals, topped by Crème Travertine stone. Substantial in form, yet airy and reflective, it offers ample open space for displaying art books and objects.

CONSTRUCTION: Top is a natural stone. Natural variations in color, veining and spotting will vary from piece to piece. Natural materials are porous in nature and care should be taken to protect the surface.

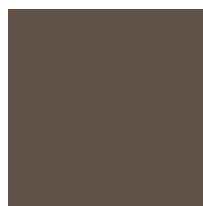
FINISH:



Dry Martini. Brushed
Gold



Brushed Stainless



Deep Bronze

